

**15V  
4519**

## Ford Ranger Md.2016

Styling bar 60  
Stylingbügel 60  
Arceau 60

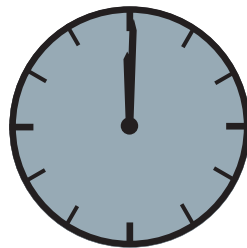


for vehicles with leadframe please  
order additionally 15V9520  
für Fahrzeuge mit Leiterrahmen be  
stellen sie bitte zusätzlich 15V9520  
véhicule avec châssis en échelle ordre  
en outre 15V9520



# ASSEMBLY INSTRUCTION

Montageanleitung • Instructions de montage

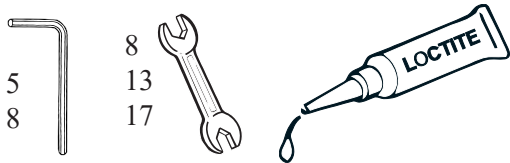


60 Minuten

Artikel-Nr:  
15V4519  
15V5519 black steel

Revision 2: 26.09.2016

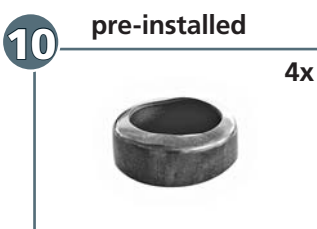
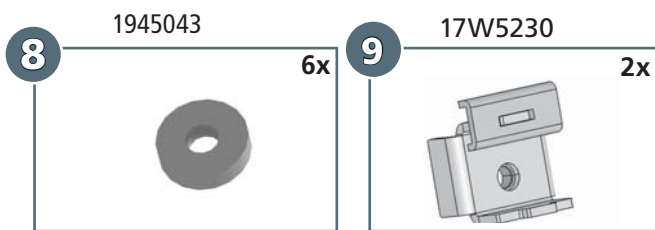
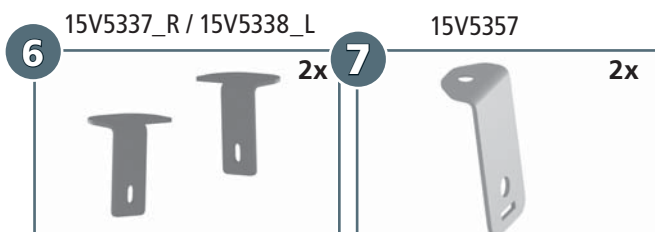
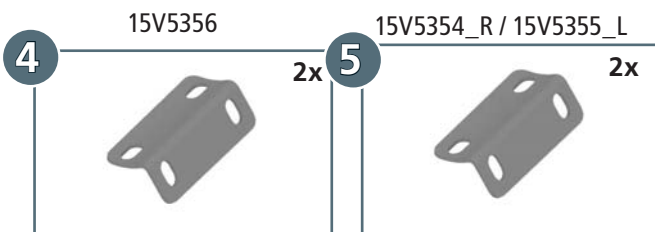
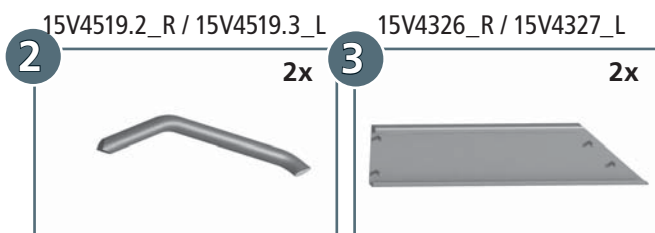




M5(A2): 5,1 Nm  
 M8(A2): 21,4Nm  
 M8: 25 Nm  
 M10(A2): 44Nm  
 M10: 50 Nm

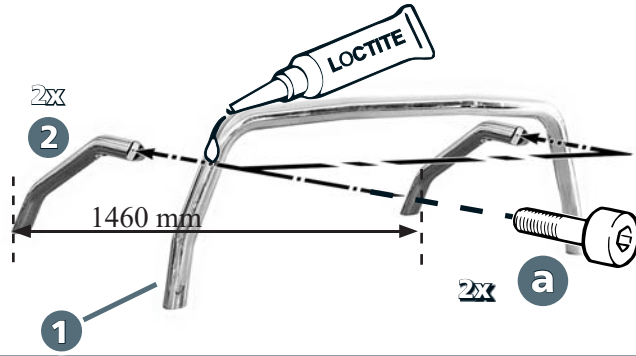


M5: 2Nm

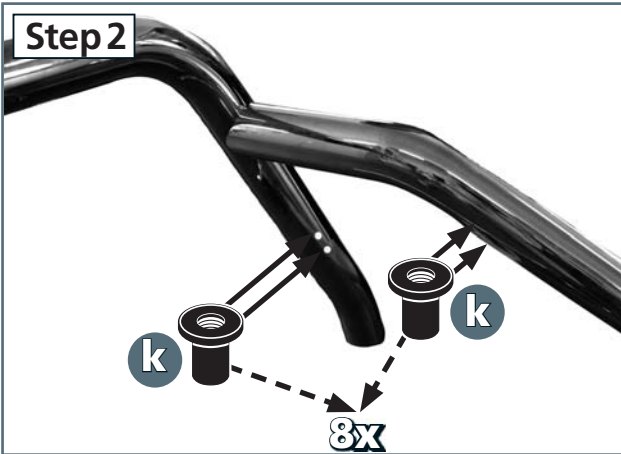


a		M10x30; DIN 912 A2	2x
b		M5x20; DIN 933 A2	8x
c		M8x30; DIN 933 Zn	2x
d		M10x40; DIN 933 Zn	2x
e		M8x25; DIN 7991 A2	4x
f		M5; DIN 985 A2	8x
g		Ø8; DIN 127 Zn	2x
h		ø5,3; DIN 125 A2	16x
i		ø8,4; DIN 9021 Zn	2x
j		ø10,5; DIN 125 Zn	2x
k		Getowell M5	8x
l		SW8	16x
m		SW17	2x

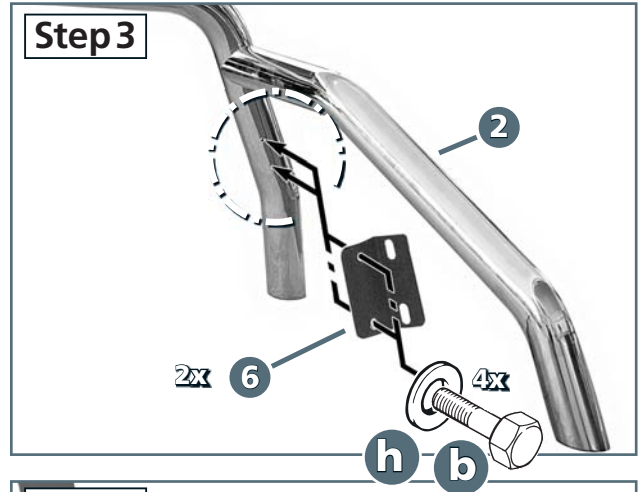
### Step 1



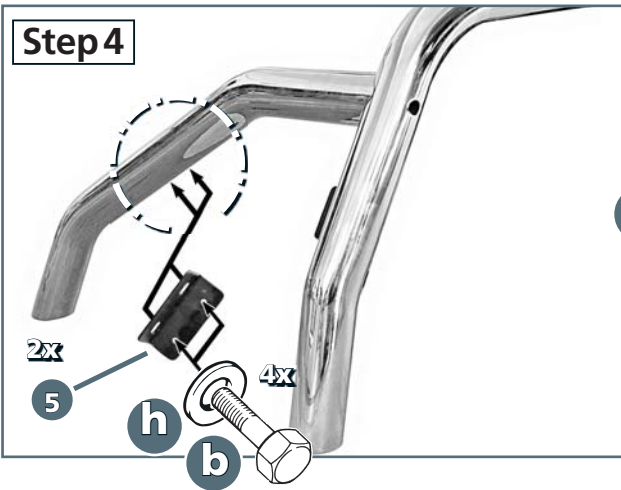
### Step 2



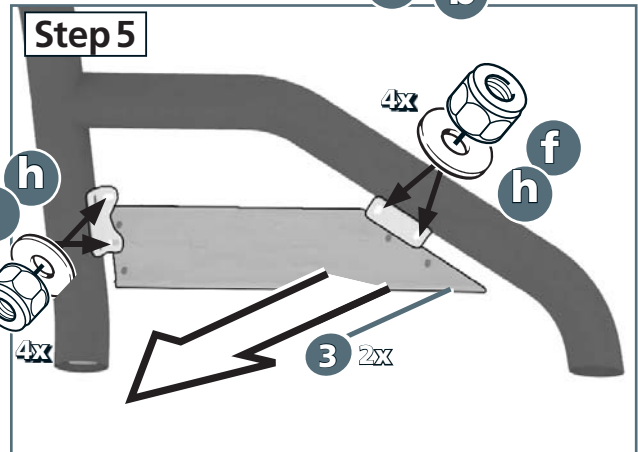
### Step 3



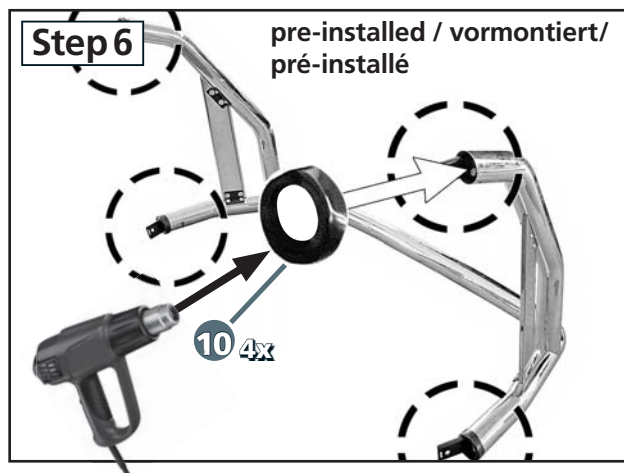
### Step 4

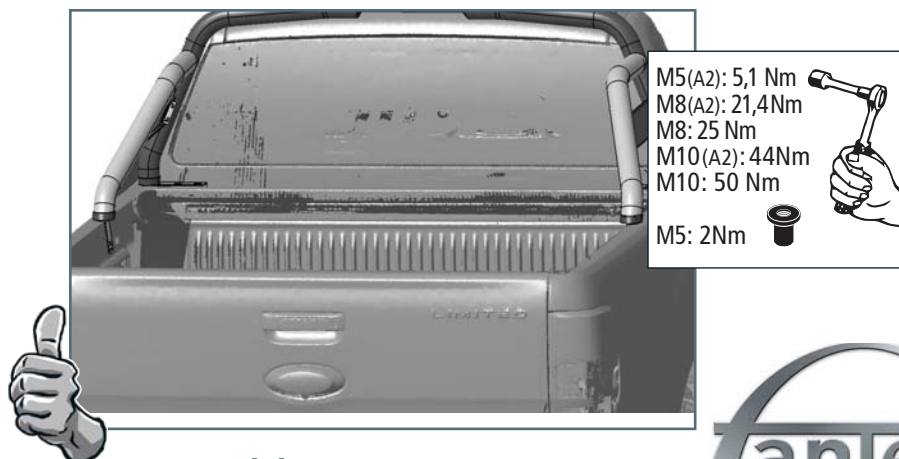
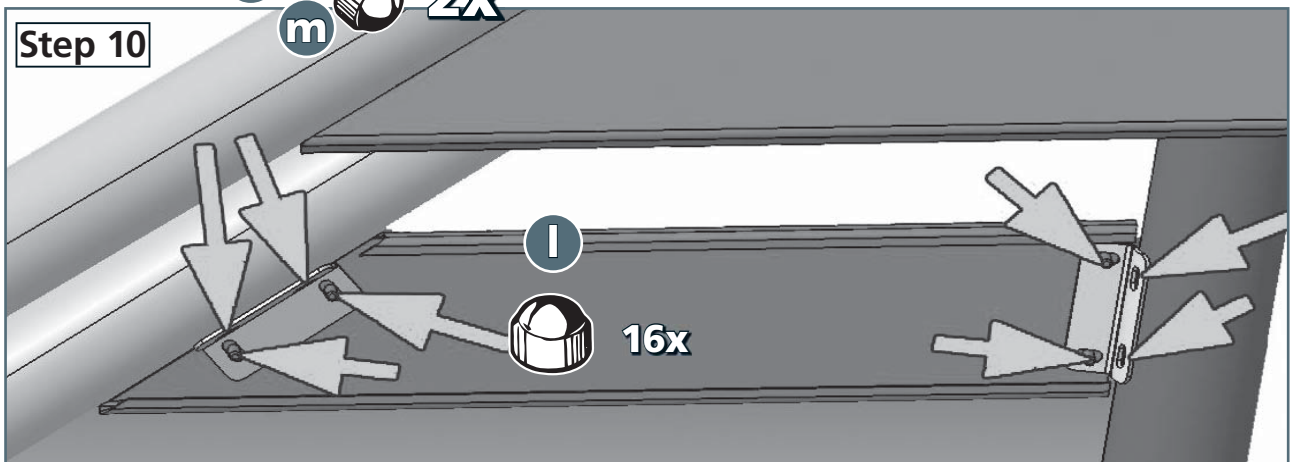
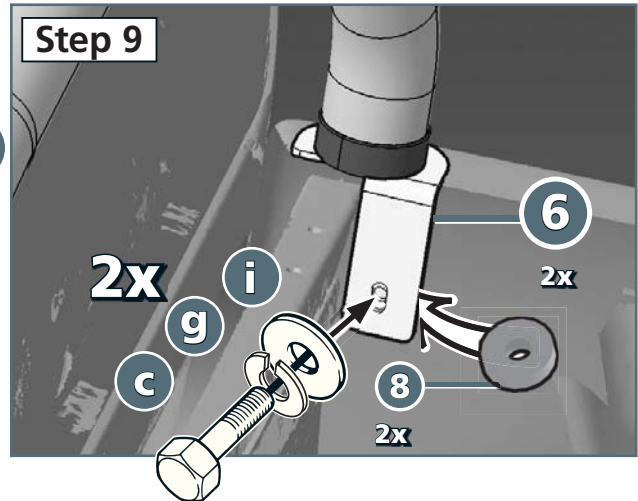
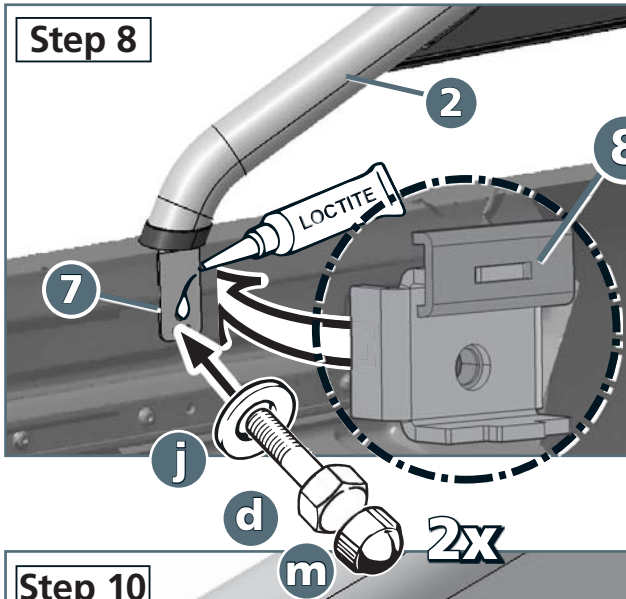
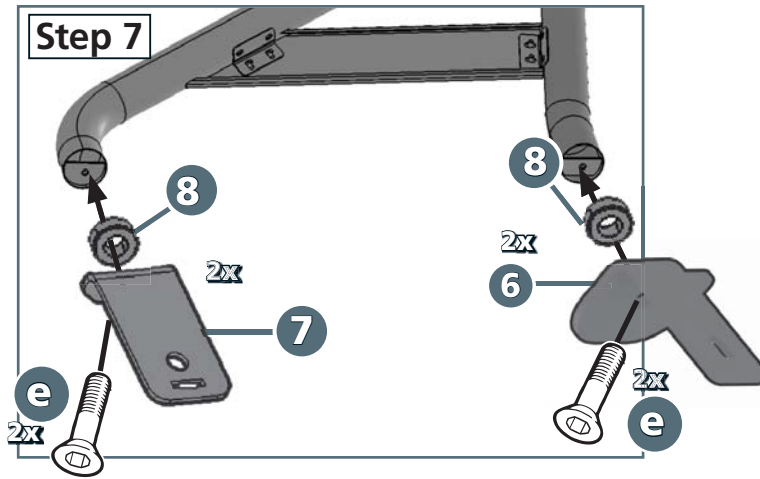


### Step 5



### Step 6





Revision 2: 26.09.2016

